

# Bottle Trap

## *Installation Guide*

# Bottle Trap Installation Guide



## Contents

Product Parts	1
Installation Method	2
Cleaning your Bottle Trap	4

**Experience, *the difference.***

[LINSOL.COM.AU](http://LINSOL.COM.AU)

# Product Parts

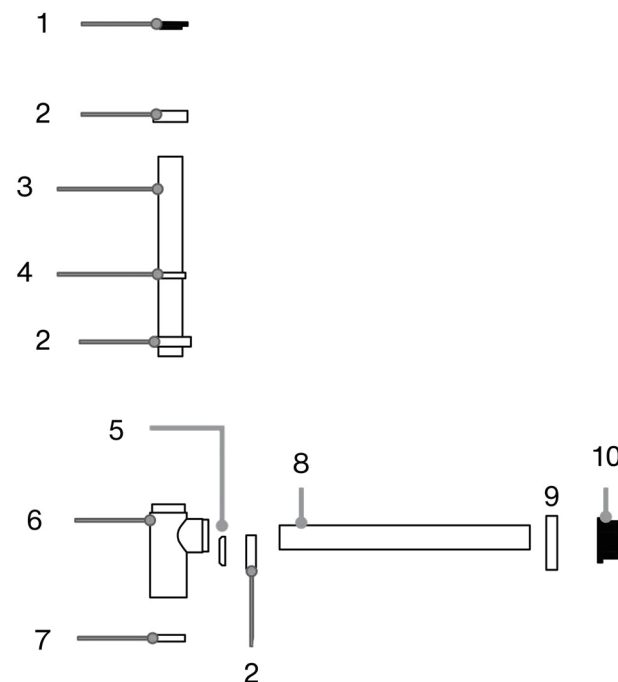


## Tools and Materials Required

- Dry cloth
- Bucket
- Tape Measure
- Protective Gloves
- Metal Saw, File or Sandpaper

## Important Information

- Check the product thoroughly for any damage before assembly.
- Wear suitable protective gloves during installation.
- Do not use abrasive cleaning products.



### Parts Identification

- |                            |                        |
|----------------------------|------------------------|
| 1. Upper Sealing Ring      | 6. Odor Trap           |
| 2. Union Nut (3x included) | 7. Clean Out Cap       |
| 3. Waste Tube              | 8. Wall Pipe           |
| 4. Sliding Tube            | 9. Dress Ring          |
| 5. Lower Sealing Ring      | 10. Rubber Outlet Seal |

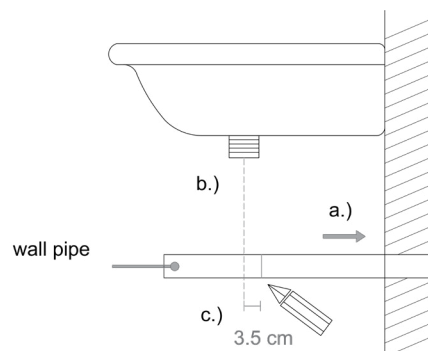
Experience, *the difference.*

# Installation Method



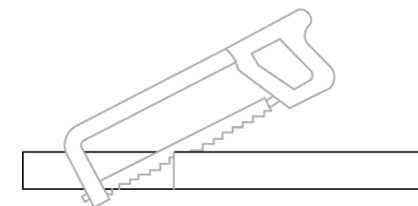
## Step 1.

- Push the wall pipe (8) into the waste water connection.
- Determine where the center of the basin waste aligns with the wall pipe. Mark the center using a pencil on the wall pipe.
- Now measure a distance of 3.5cm from the center mark the mounting wall. Mark this as the cutting mark.



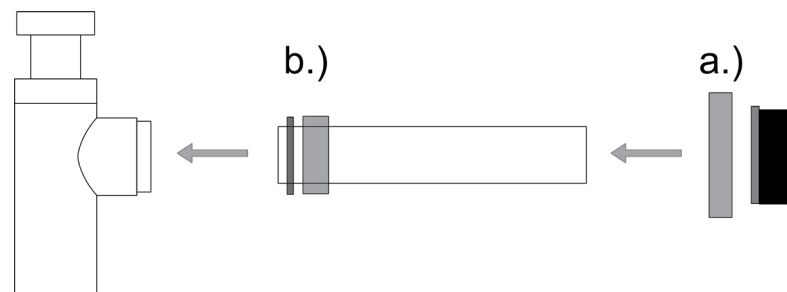
## Step 2.

- Use a metal saw to shorten the pipe at the cutting mark. (Tip: Wear safety gloves when shortening. It is important that the cut is vertical, and the surface is as smooth as possible)
- After shortening, be sure to deburr the cut surface with a file or sandpaper.



## Step 3.

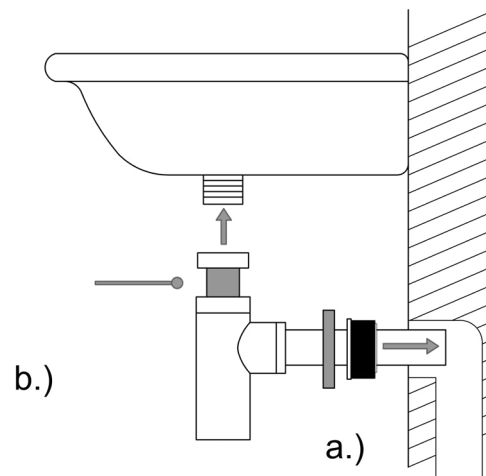
- Slide the dress ring (9) and rubber outlet seal (10) onto the wall pipe (8).
- Screw the wall pipe to the lower sealing ring (5) and the Oder trap (6) with union nut (2).



Experience, *the difference.*

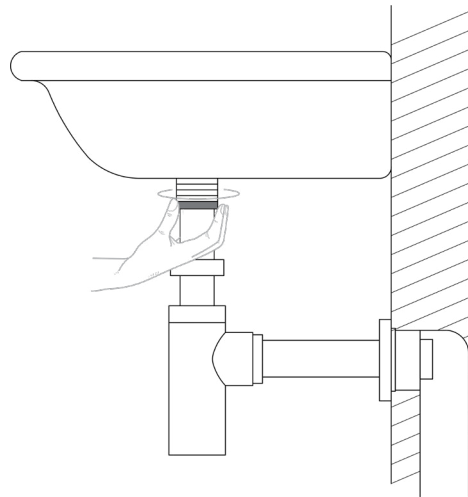
## Step 4.

- Push the wall pipe (8) towards the wastewater connection and move the dress ring (9) and rubber outlet seal (10) towards the wall to seal the connection.
- Adjust the length of the waste tube (3) upwards towards the basin drain. If the tube is too long it must be shortened with a metal saw.



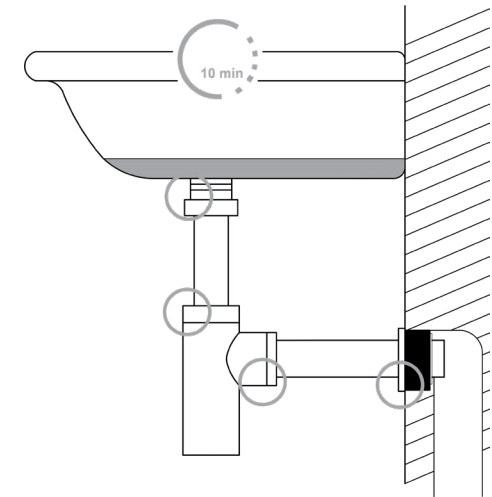
## Step 5.

- Screw the union nut (2) of the waste tube onto the basin.



## Step 6.

- Place a bucket under basin & bottle trap. Fill the basin with water and wait 10 minutes.
- Now test at the marked points whether water has leaked out.



Experience, *the difference.*

# Cleaning your Bottle Trap



- Overtime, decomposed organic material forms which can smell unpleasant and prevent drainage. It is important to clean your bottle trap often to reduce potential blockages. As a precaution, wear protective gloves when cleaning your bottle trap.
- Place a bucket under the bottle trap. Using the opening tool provided, open the Clean Out Cap (7). Clean all internal and external surfaces and rinse the bottle trap with clean water.
- Once cleaned, re-screw Clean Out Cap (7) onto Odour Trap (6).

Experience, *the difference.*



Experience, *the difference.*