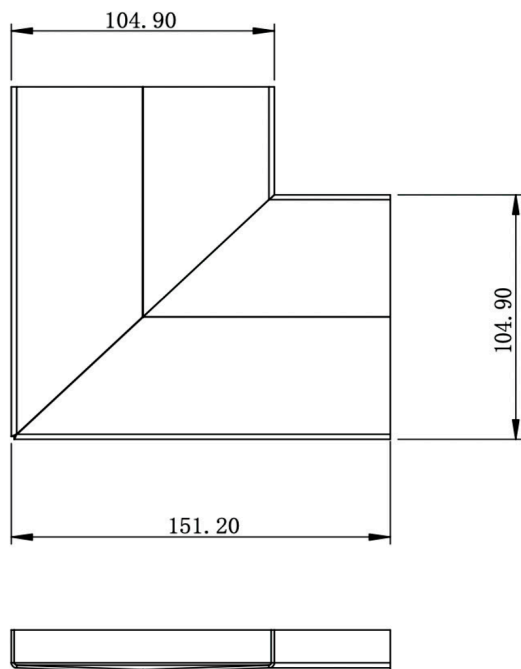


Ezyflow 24 Series Base Corner Joiner

Brushed Nickel



Product Specifications

Code EZY-CNRJOIN-BR

Barcode 9339897018593

Finish Brushed Nickel

Material 316 Stainless Steel

Steel Thickness 1.2mm, 2.5mm Rolled Edge

Experience, the difference.



LINSOL.COM.AU

☎ 1300 546 765

@ info@linsol.com.au

✉ PO Box 88, Coniston NSW 2500

Warranty is for domestic use only. All information is correct as at time of writing.
The actual product may vary slightly and sizes may be scaled up or down