

# Sink Mixer

## *Installation Guide*

# Sink Mixer Installation Guide



## Contents

Sink Mixer	1
Pull Out Sink Mixer	2

## Important Information

- All these instructions serve as a guide only and must be installed by a licenced plumber and according to Australian Standards or relevant local authority requirements..
- All supply lines must be flushed prior to installation, removing any foreign matter.
- Stop valves must be installed as in accordance with the regulatory authorities.
- Suitable for installation with most instantaneous hot water heaters
- Not suitable for gravity fed hot water systems
- All plumbing products must be installed to ASNZ3500 Series Standards

Maximum water temperature	70 degrees Celsius
Maximum water pressure	500kPa
Minimum water pressure	150kPa

In high pressure areas where the pressure exceeds the maximum water pressure as noted above, approved pressure limiting valves must be installed.

If water temperature exceeds 70 degrees, an approved water tempering valve must be fitted.

Failure to comply with all the above may void all warranties.

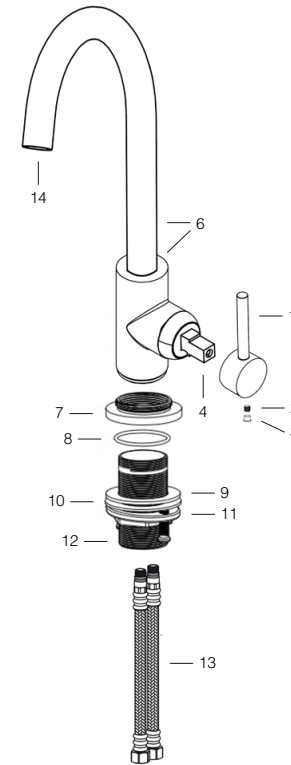
Experience, *the difference.*

# Sink Mixer



## Installation

1. Place the O Ring into the base plate (7) and into position.
2. Before installing the Inlet Hoses apply lubricant to the O-rings (8), then proceed to install the Inlet Hoses (13) into the underside of the mixer body (6) with the corresponding colour. Red = Hot, Blue = Cold.
3. Align the base plate (7) with the flexible hoses (13) and the mixer body (6) over the basin hole and fit off.
4. Fit rubber washer (9), metal washer (10) and the locking nut (11) over the flexible hoses (13) and tighten. Once secure there are 2 screws in the locking nut, tighten if needed.
5. Be sure to check that the mixer is secured firmly and that there are no visual signs of any leaks.

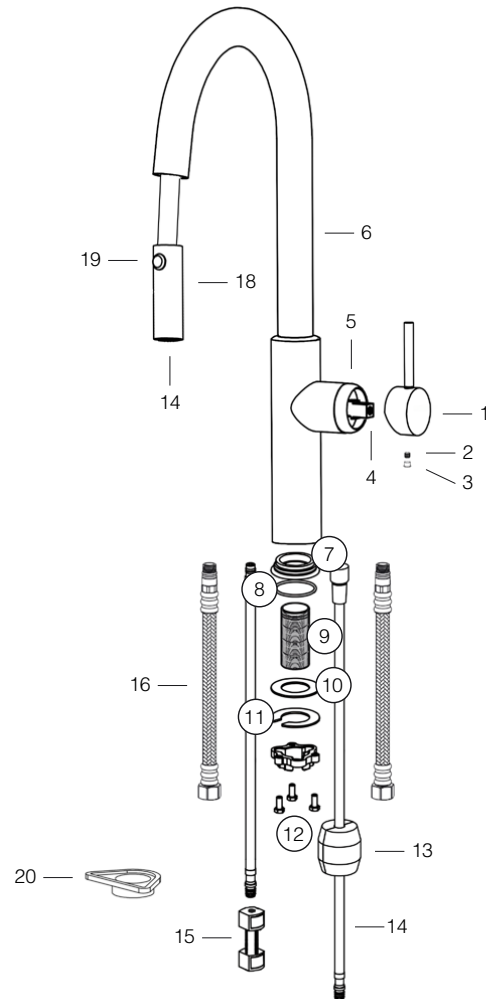


### Product Parts

- |                           |                       |                     |
|---------------------------|-----------------------|---------------------|
| 1. Handle                 | 6. Mixer Body & Spout | 11. Locking Nut     |
| 2. Grub Screw             | 7. Base Plate         | 12. Threaded Sleeve |
| 3. Grub screw Cap         | 8. O Ring             | 13. Inlet Hoses     |
| 4. Ceramic Disc Cartridge | 9. Rubber Washer      | 14. Aerator         |
| 5. Dome                   | 10. Metal Washer      |                     |

*Experience, the difference.*

# Pull Out Sink Mixer



## Product Parts

1. Handle
2. Grub Screw
3. Grub Screw Cap
4. Ceramic Disc Cartridge
5. Dome
6. Mixer Body & Spout
7. Base Plate
8. O Ring
9. Threaded Sleeve
10. Rubber Washer
11. Metal Washer
12. Locking Nut
13. Counterweight
14. Pull Out Hose
15. Quick Connector
16. Inlet Hoses
17. Aerator
18. Pull Out Wand
19. Twin Spray
20. Triangle Plastic Washer

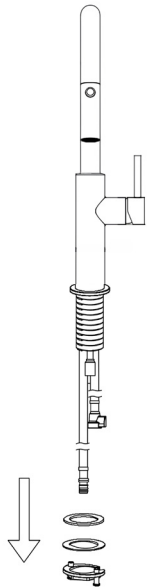
Experience, *the difference.*

# Pull Out Sink Mixer Installation



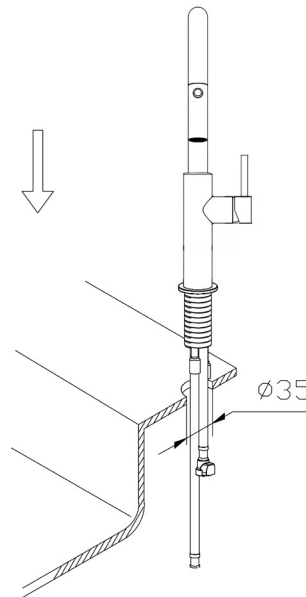
## Step 1.

Remove the pre-installed washers and locking nut from the threaded sleeve.



## Step 2.

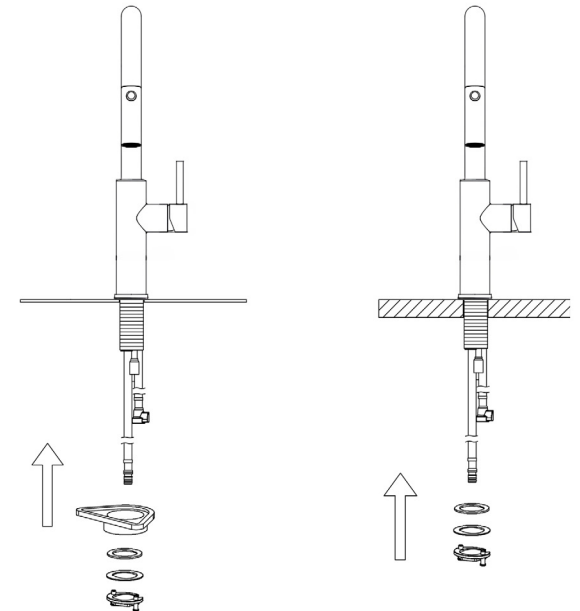
Install the Base Plate and the O Ring onto the threaded sleeve and insert the threaded sleeve through the tap hole.



## Step 3.

Slide the rubber washer, the metal washer and then the locking nut over the hoses and onto the threaded sleeve. Tighten the locking nut firmly against the washers.

If your model has a triangle plastic washer, this can be added before the rubber washer when mounting to a stainless-steel sink.



*Experience, the difference.*

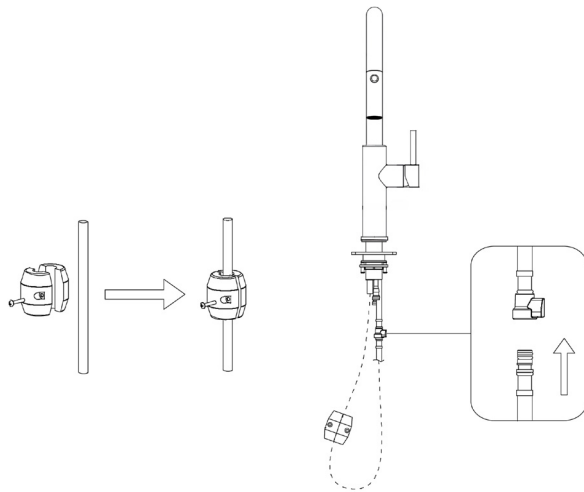
# Installation Instructions



## Step 4.

Connect the Quick connector to the pull out hose, you will hear a click. Attach the counterweight to the pull out hose approx 200mm from the bottom of the pull out hose.

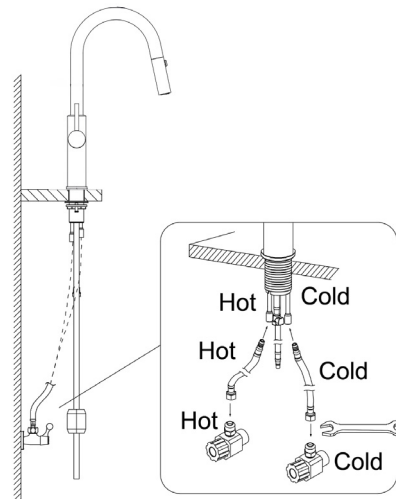
Note: this will vary depending on space available under your sink. Ensure the counterweight retracts when the Pull Down wand is pulled.



## Step 5.

Connect Inlet Hoses to the water supply. Ensure the Red braided inlet hose is connected to the hot water supply and the Blue braided inlet hose is connected to the cold water supply.

Check and test for any leaks.



**Experience, the difference.**



Experience, *the difference.*