

Mixers

Installation Guide

Mixer Installation Guides



Contents

Wall Mixer	1
Wall Mixer with Divertor	2
Wall Basin or Bath Mixer	3
Basin & Sink Mixer	4

Important Information

- All these instructions serve as a guide only and must be installed by a licenced plumber and according to Australian Standards or relevant local authority requirements..
- All supply lines must be flushed prior to installation, removing any foreign matter.
- Stop valves must be installed as in accordance with the regulatory authorities.
- Suitable for installation with most instantaneous hot water heaters
- Not suitable for gravity fed hot water systems
- All plumbing products must be installed to ASNZ3500 Series Standards

Maximum water temperature	70 degrees Celsius
Maximum water pressure	500kPa
Minimum water pressure	150kPa

In high pressure areas where the pressure exceeds the maximum water pressure as noted above, approved pressure limiting valves must be installed.

If water temperature exceeds 70 degrees, an approved water tempering valve must be fitted.

Failure to comply with all the above may void all warranties.

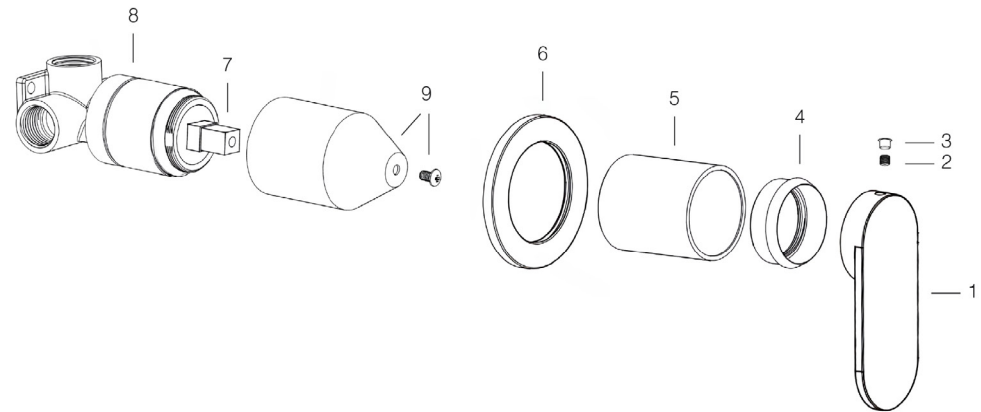
Experience, *the difference.*

Wall Mixer



Installation

1. Please ensure that the depth is within your specification and there is a mountin plate or noggin in the wall cavity.
2. Screw the Universal Body (8) to the noggin or mounting plate ensuring that the body of the mixer is straight and the water outlet is facing in an upright position
3. The wall mixer has the connection marking on the body (8). H = Hot, C = Cold. After connecting the water inlets please ensure that the unit is tested thoroughly for any leaks.
4. When ready, remove the plastic cone and fit the back plate (6) over the Universal Body (8) pushing it firmly against the wall.
5. Fit handle (1) making sure that its firmly onto cartridge (7) and then tighten the grub screw with allen key (2) and inset grub screw cap (3 where provided).



Product Parts

- | | | | |
|----|----------------|----|---------------------------------|
| 1. | Handle | 6. | Back Plate |
| 2. | Grub Screw | 7. | Ceramic Disc Cartridge |
| 3. | Grub Screw Cap | 8. | LINSOL Universal Body (UNI-100) |
| 4. | Dome | 9. | Protective Sleeve + Screw |
| 5. | Sleeve | | |

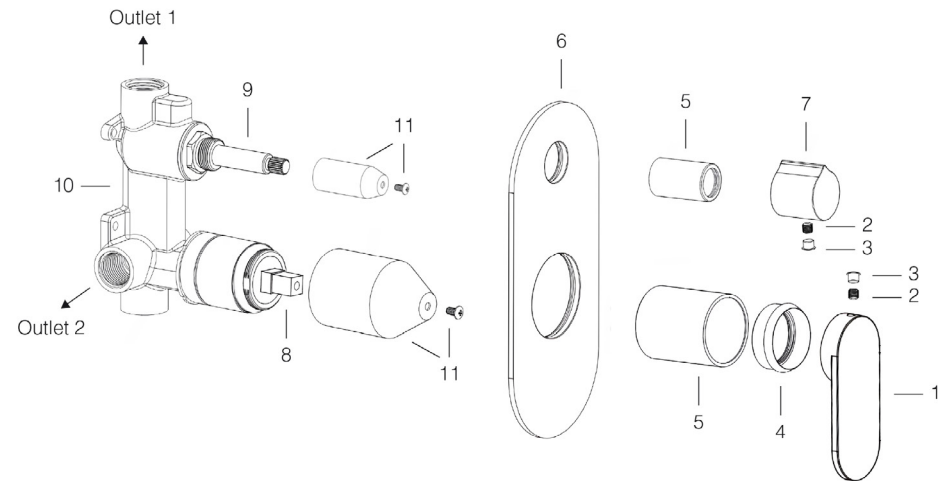
Experience, the difference.

Wall Mixer with Divertor



Installation

1. Please ensure that the depth is within your specification and there is a mountin plate or noggin in the wall cavity.
2. The divertor must be installed with the divertor knob (7) above the mixer handle (1) or as shown in the image to the right.
3. Screw the Universal Body (10) to the noggin or mounting plate ensuring that the body of the mixer is straight and the water outlet is facing in an upright position
4. The wall mixer has the connection marking on the body. H = Hot, C = Cold. After connecting the water inlets please ensure that the unit is tested thoroughly for any leaks.
5. Fit the back plate (6) over the Universal Body (10) pushing it firmly against the wall.
6. Fit handle (1) making sure that its firmly onto cartridge (8) and then tighten the grub screw with allen key (2) and inset grub screw cap (3 where provided).



Product Parts

- | | | | |
|----|---------------|-----|---------------------------------|
| 1. | Handle | 7. | Divertor Knob |
| 2. | Grub Screw | 8. | Ceramic Disc Cartridge |
| 3. | Push in Cover | 9. | 1/2 Turn Divertor Spindle |
| 4. | Dome | 10. | LINSOL Universal Body (UNI-300) |
| 5. | Sleeve | 11. | Protective Sleeve + Screw |
| 6. | Back Plate | | |

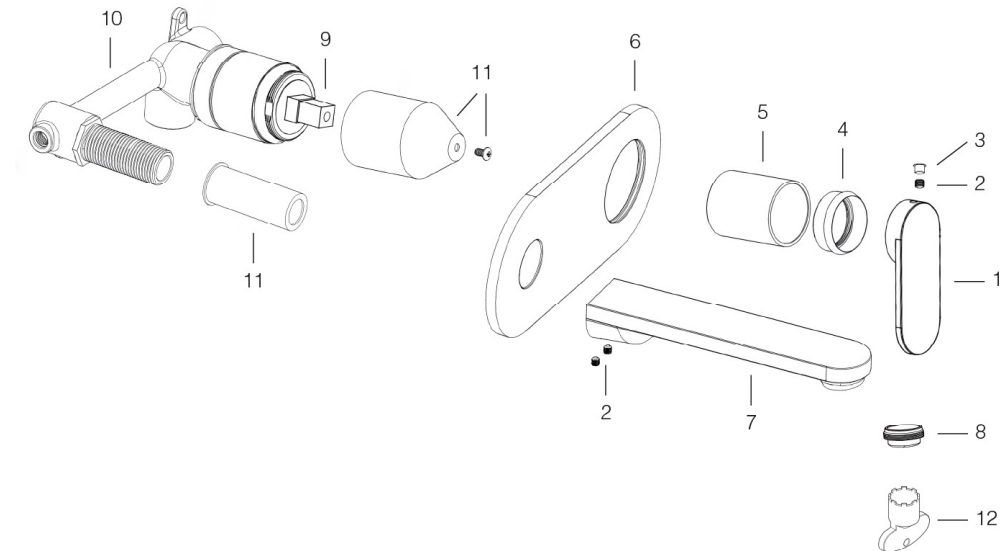
Experience, the difference.

Wall Basin or Bath Mixer



Installation

1. Please ensure that the depth is within your specification and there is a mounting plate or noggin in the wall cavity.
2. Screw the Universal Body (10) to the noggin or mounting plate ensuring that the body of the mixer is straight and the water outlet connection with the attached water outlet is facing in the correct position.
3. The wall mixer has the connection marking on the body. H = Hot, C = Cold. After connecting the water inlets please ensure that the unit is tested thoroughly for any leaks.
4. Fit the wall back plate (6) over the Universal Body (10) pushing it firmly against the wall.
5. Fit handle (1) making sure that it's firmly onto cartridge (9) and then tighten the grub screw with allen key (2) and inset grub screw cap (3 where provided). LINSOL utilises 2 types of spout attachments. Ensure if any threads need to be sealed that a type of liquid Teflon or glue is used.
6. Remove outlet grub screws (2) and screw spout directly on the body thread (10), or push to fit adapter (some models only).
7. Screw in grub screws (2) ensuring that no damage occurs to O-rings.
8. Check for any water leaks again.



Note: This mixer comes standard as a Basin mixer. To change Aerator for use with a Bath, use Aerator key (12) to unscrew aerator (8). Screw in unrestricted aerator and tighten with Aerator key (12).

Product Parts

- | | | | |
|----|----------------|-----|--|
| 1. | Handle | 7. | Spout |
| 2. | Grub Screw | 8. | Aerator (Unrestricted separate in box) |
| 3. | Grub Screw Cap | 9. | Ceramic Disc Cartridge |
| 4. | Dome | 10. | Universal Body (UNI-200) |
| 5. | Sleeve | 11. | Protective Sleeve + Screw |
| 6. | Back Plate | 12. | Aerator key |

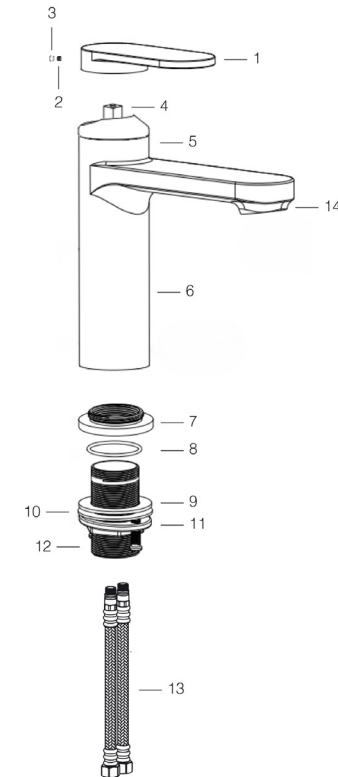
Experience, the difference.

Basin & Sink Mixer



Installation

1. Place the O Ring into the base plate (7) and into position.
2. Before installing the Inlet Hoses apply lubricant to the O-rings (8), then proceed to install the Inlet Hoses (13) into the underside of the mixer body (6) with the corresponding colour. Red = Hot, Blue = Cold.
3. Align the base plate (7) with the flexible hoses (13) and the mixer body (6) over the basin hole and fit off.
4. Fit rubber washer (9), metal washer (10) and the locking nut (11) over the flexible hoses (13) and tighten. Once secure there are 2 screws in the locking nut, tighten if needed.
5. Be sure to check that the mixer is secured firmly and that there are no visual signs of any leaks.



Product Parts

- | | |
|---------------------------|---------------------|
| 1. Handle | 8. O Ring |
| 2. Grub Screw | 9. Rubber Washer |
| 3. Grub Screw Cap | 10. Metal Washer |
| 4. Ceramic Disc Cartridge | 11. Locking Nut |
| 5. Dome | 12. Threaded Sleeve |
| 6. Mixer Body | 13. Inlet hoses |
| 7. Base Plate | 14. Aerator |

Experience, *the difference.*



Experience, *the difference.*