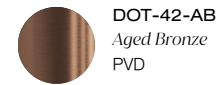
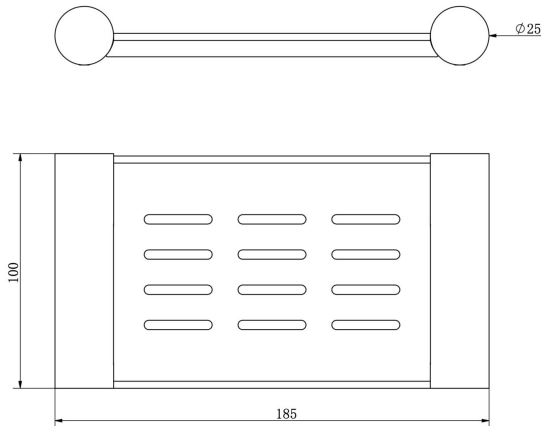
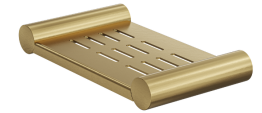


## Product Specifications

**Code:** DOT-42-BB  
**Finish:** Brushed Brass  
**Barcode:** 9339897032186  
**Primary Material:** 304 Stainless Steel  
**Technical Features:** Solid Brass Fixing Mount



**DOT-42-AB**  
*Aged Bronze*  
PVD



**DOT-42-BB**  
*Brushed Brass*  
PVD



**DOT-42-BN**  
*Brushed Nickel*  
Raw Brush



**DOT-42-CH**  
*Chrome*  
Electroplate



**DOT-42-GM**  
*Gunmetal*  
PVD



**DOT-42-MB**  
*Matte Black*  
Electroplate



Experience, *the difference.*



LINSOL.COM.AU

☎ 1300 546 765

@ info@linsol.com.au

✉ PO Box 88, Coniston NSW 2500

All information is correct at time of writing. The actual product may vary slightly and sizes may be scaled up or down. Warranty is for domestic use only. For warranty & care information please visit [linsol.com.au/warranty](http://linsol.com.au/warranty)